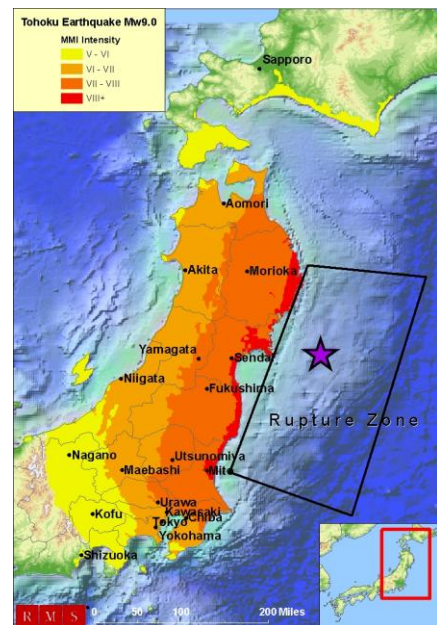


## ● Earthquakes and plate tectonics

We have drawn upon a selection of resources which aim to explain how and why earthquakes occur, why some result in a Tsunami, and also examine what warning systems are in place.

- [The Sendai earthquake - an update \(PDF\)](#) - this briefing, written by Professor David Petley, Durham University, for the Society, provides details of how and why the recent earthquake in Japan took place
- [Japan's Tsunami: How It Happened](#) – This programme, which aired on Channel 4 in March 2011, investigates the science behind the Japanese earthquake and tsunami
- [Liquefaction from the Sendai earthquake – a remarkable video](#) – A blog and video link by the American Geophysical Union, which explains the process of Liquefaction, what was happening beneath the surface
- [Interview: The Japanese earthquake and tsunami](#) - Dr Bruce Malamud answers questions on our Geography in The News website
- [Articles from the Tohoku Geographical Association, Japan](#) with a collection of web articles to understand geographical description of affected areas, including topics of housing, transport, and population details.



Estimated shaking intensity for the Sendai Earthquake. Source: [RMS](#) 2011

For a greater selection of information on earthquakes take a look at our [earthquakes tag](#) in delicious.